

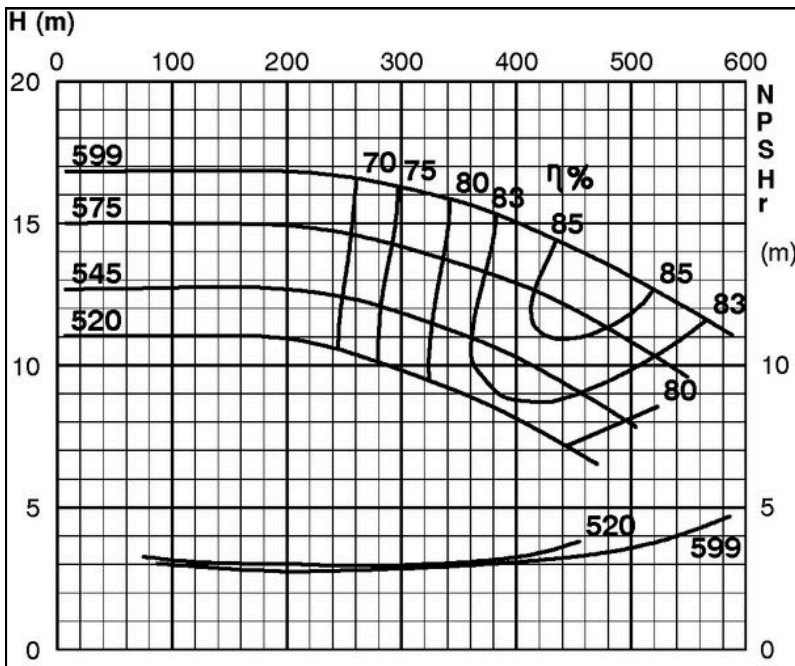
TECHNICAL SPECIFICATIONS



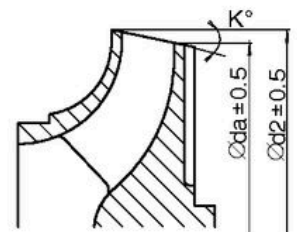
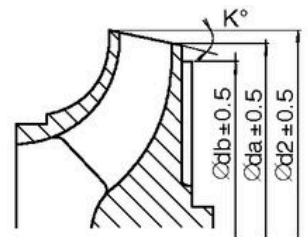
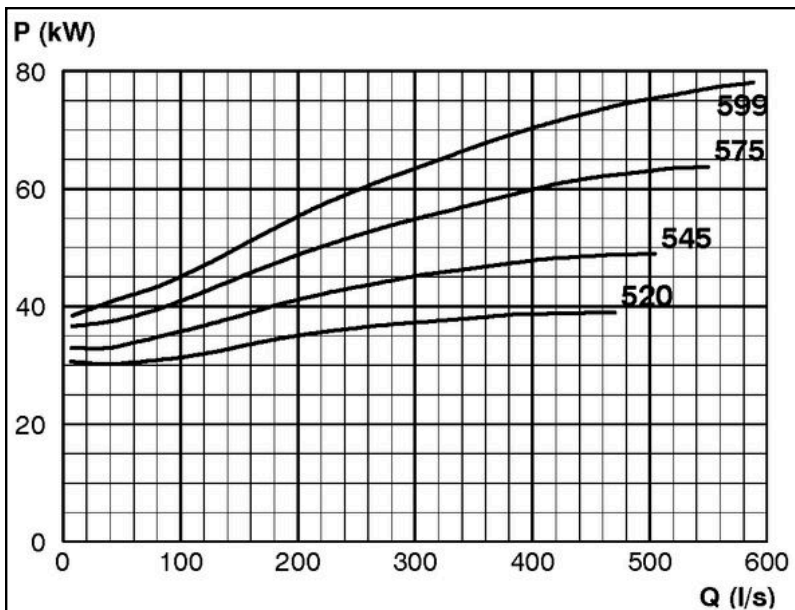
ISP Process Pumps - ISP400-600 (500-400-600)
ISP Impeller 283935 Closed B93 Z6

Performance Curve - ISP400-600-C-600

600 rpm



IMPELLER DIA			
$\varnothing d_2$ (mm)	K°	$\varnothing d_a$ (mm)	$\varnothing d_b$ (mm)
599	7	576.5	572.6
595	7	572.0	
590	8	564.0	
585	8	559.0	
580	9	550.0	
575	9	545.0	
570	10	537.0	
565	10	531.0	
560	11	523.0	
555	11	517.0	
550	13	505.0	
545	13	500.0	
540	14	491.0	
535	14	485.0	
530	15	477.0	
525	16	468.0	
520	17	459.0	



RET14166